

Project: \_\_\_\_\_  
 Designer: \_\_\_\_\_  
 Fixture: \_\_\_\_\_



See legend at end of document

### Using this Information

- Once a XFL linear flexible light source has been selected, select accessories for the XFL.
- IP22 XFL have a layer of 3M adhesive tape on the back and can be surface mounted using the adhesive. Using a mounting clip (XLA-M) is optional.
- Select connectors (XLA-X) for strip to strip or strip to wire attachments for joining sections of IP22 XFL tape.
- IP67 XFL do not come with adhesive on the back and have to be mounted using clips (XLA-M). Installers may use double-sided adhesive tape to mount the IP67 XFL and Xicato recommends the 3M 4229 for that purpose.
- IP67 XFL must also be sealed at the ends of the strip using a boot (XLA-B), and by applying a silicone sealant to fix the boot in place. Xicato recommends a non-acidic neutral silicone sealant such as Loctite Superflex SI 5050CL, Dow Corning 737, Momentive RTV-11, or similar for that purpose.
- Connectors (XLA-X) for IP67 XFL are also available for some XFL types to connect strip to strip or strip to wire.

## XLA-X Connectors

### XLA-X-SNP-S2S-2-10-22



#### XLA-X-SNP-S2S-2-10-22

##### Compatibility

22 → SW HD FS DW

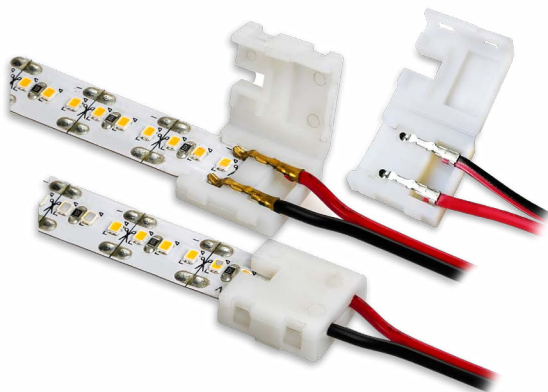
##### Description

XFL 2-pin snap connector, 10mm strip to 10mm strip. Max voltage 24V. Max current 5A.

##### Dimensions

Width x Height: 14.5mm x 4.6mm

### XLA-X-SNP-S2W150-2-10-22



#### XLA-X-SNP-S2W150-2-10-22

##### Compatibility

22 → SW HD FS DW

##### Description

XFL 2-pin splice connector, 10mm strip to 6" wire leads. Max voltage 24V. Max current 5A. 6" 20AWG UL2464 wire.

##### Dimensions

Width x Height: 14.5mm x 4.6mm

### XLA-X-HPP-S2W0-2-10-22



### XLA-X-HPP-S2W0-2-10-22

#### Compatibility

22 – SW HD FS DW

#### Description

XFL 2-pin hippo connector, 10mm strip to wire for single color strip light. Max voltage 36V. Max current 3A. Wire 18-22 AWG.

#### Dimensions

Length x Width x Height: 24.3mm x 14.6mm x 7.7mm

### XLA-X-HPP-S2S-2-10-22



### XLA-X-HPP-S2S-2-10-22

#### Compatibility

22 – SW HD FS DW

#### Description

XFL 2-pin hippo connector, 10mm strip to 10mm strip for single color strip light. Max voltage 36V. Max current 3A. Wire 18-22 AWG.

#### Dimensions

Length x Width x Height: 19.55mm x 14.6mm x 7.7mm

### XLA-X-HPP-S2W0-2-5-22



### XLA-X-HPP-S2W0-2-5-22

#### Compatibility

22 – SE

#### Description

XFL 2-pin hippo connector, 5mm strip to wire. Max voltage 36V. Max current 3A. Wire 18-22AWG.

#### Dimensions

Length x Width x Height: 24.27mm x 9.6mm x 7.32mm

### XLA-X-HPP-S2S-2-5-22



### XLA-X-HPP-S2S-2-5-22

#### Compatibility

22 – SE

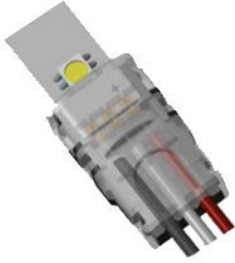
#### Description

XFL 2-pin hippo connector, 5mm strip to 5mm strip. Max voltage 36V. Max current 3A.

#### Dimensions

Length x Width x Height: 19.55mm x 9.6mm x 7.32mm

### XLA-X-HPP-S2W0-3-10-22



### XLA-X-HPP-S2W0-3-10-22

#### Compatibility

22 – TW

#### Description

XFL 3-pin connector for 2-channel white strip, 10mm strip to wire. Max voltage 36V. Max current 3A. Wire 18-22 AWG.

#### Dimensions

Length x Width x Height: 24.3mm x 14.6mm x 7.7mm

### XLA-X-HPP-S2S-3-10-22



### XLA-X-HPP-S2S-3-10-22

#### Compatibility

22 – TW

#### Description

XFL 3-pin connector for 2-channel white strip, 10mm strip to 10mm strip. Max voltage 36V. Max current 3A.

#### Dimensions

Length x Width x Height: 19.6mm x 14.6mm x 7.7mm

### XLA-X-SDL-S2S-2-10-22



### XLA-X-SDL-S2S-2-10-22

#### Compatibility

22 – FS

#### Description

XFL 2-pin solid lock connector, 10mm strip to 10mm strip. Works with strips that have 120 or less LEDs/m. Max voltage 24V. Max current 6A.

#### Dimensions

Length x Width x Height: 16mm x 12.4mm x 4.5mm

### XLA-X-SDL-S2W0-2-10-22



### XLA-X-SDL-S2W0-2-10-22

#### Compatibility

22 – FS

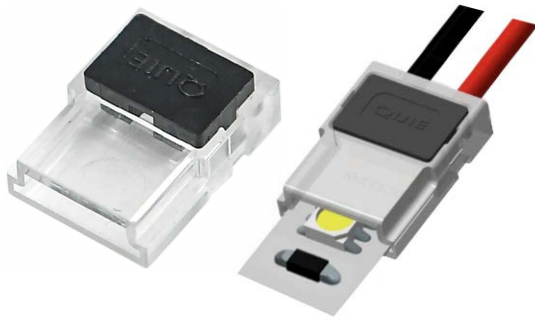
#### Description

XFL 2-pin solid lock connector, 10mm strip to wire. Works with strips that have 120 or less LEDs/m. Max voltage 24V. Max current 6A. Wire 20-22 AWG.

#### Dimensions

Length x Width x Height: 16mm x 12.4mm x 4.5mm

### XLA-X-BTC-S2W0-2-10-22



### XLA-X-BTC-S2W0-2-10-22

#### Compatibility

22 – FS

#### Description

XFL 2-pin beetle clip connector, 10mm strip to wire. Works with strips that have 120 or less LEDs/m. Max voltage 36V. Max current 5A. Wire 20 AWG.

#### Dimensions

Length x Width x Height: 15.4mm x 11.5mm x 4.3mm

### XLA-X-BTC-S2S-2-10-22



### XLA-X-BTC-S2S-2-10-22

#### Compatibility

22 – FS

#### Description

XFL 2-pin beetle clip connector, 10mm strip to 10mm strip. Works with strips that have 120 or less LEDs/m. Max voltage 36V. Max current 5A.

#### Dimensions

Length x Width x Height: 21.6mm x 11.5mm x 4.3mm

### XLA-X-SNP-S2S-3-10-22



### XLA-X-SNP-S2S-3-10-22

#### Compatibility

22 – TW

#### Description

XFL 3-pin connector for 2-channel white strip, 10mm strip to 10mm strip. Max voltage 36V. Max current 3A

#### Dimensions

Length x Width x Height: ---mm x 11.5mm x 5.7mm

### XLA-X-HPP-S2W0-2-10-67



### XLA-X-HPP-S2W0-2-10-67

#### Compatibility

67 – SW HD FS DW

#### Description

XFL 2-pin IP67 hippo connector, 10mm strip to wire. Max voltage 36V. Max current 5A. Wire 18-22AWG.

#### Dimensions

Length x Width x Height: 26mm x 17mm x 4mm

## XLA-X-HPP-S2S-2-10-67



### XLA-X-HPP-S2S-2-10-67

#### Compatibility

67 → SW HD FS DW

#### Description

XFL 2-pin IP67 hippo connector, 10mm strip to 10mm strip. Max voltage 36V. Max current 5A.

#### Dimensions

Length x Width x Height: 26mm x 17mm x 4mm

## XLA-B Boot Accessories

### XLA-B-10-STD-67



### XLA-B-10-STD-67

#### Compatibility

67 → SW HD FS DW TW

#### Description

IP67 end cap or boot without hole, for 10mm strip.

### XLA-B-10-HOLE-67



### XLA-B-10-HOLE-67

#### Compatibility

67 → SW HD FS DW TW

#### Description

IP67 end cap or boot with hole, for 10mm strip.

### XLA-B-5-STD-67



### XLA-B-5-STD-67

#### Compatibility

67 → SE

#### Description

IP67 end cap or boot without hole, for 5mm strip.

## XLA-B-5-HOLE-67



### XLA-B-5-HOLE-67

#### Compatibility

67 - SE

#### Description

IP67 end cap or boot with hole, for 5mm strip.

## XLA-M Mounting Accesories

### XLA-M-CLPS-10-22



### XLA-M-CLPS-10-22

#### Compatibility

22 - SW HD FS DW TW

#### Description

Mounting clip, IP22, for 10mm strip, single screw.

### XLA-M-CLPS-10-67



### XLA-M-CLPS-10-67

#### Compatibility

67 - SW HD FS DW TW

#### Description

Mounting clip, IP67, for 10mm strip, waterproof, single screw

### XLA-M-CLPD-10-67



### XLA-M-CLPS-10-67

#### Compatibility

67 - SW HD FS DW TW

#### Description

Mounting clip, IP67, for 10mm strip, waterproof, dual screw

## LEGEND



90-days warranty



Restriction of Hazardous Substance



IP22



IP67



Static White



High Density



Full Spectrum



Side Emitting



Ultra Slim



Dim to Warm



Tunable White

Refer to XFL product Data Sheet for specific lumen values.

Field modifications and installation must comply with all local and national codes as well as Xicato's installation methods, see [xicato.com](http://xicato.com) for more information. Manufacturer retains the right to change specification information at any time.



**Xicato Global Headquarters**  
102 Cooper Court, Los Gatos, CA 95032

**Contact Us**  
Tel: +1 866 223 8395 | [info@xicato.com](mailto:info@xicato.com)